



# CUSTOM LINE 112 NEXT

MODEL YEAR: 2008 FLAG: JERSEY

## ENGINE HOURS

Port ME 446

Starboard ME 447

Generator 1: 7552

Generator 2: 7010

## ENGINES

2 \* MTU 12V 4000 M90 power 2775 mhp / 2040 kW at 2100 rpm



PROFILE

## MAIN SIZES

Loa = Overall length (standard ISO 8666)	34,00	m	111 ft. 7 in.
Lh = Hull length (standard ISO 8666)	34,00	m	111 ft. 7 in.
Lwl = Waterline length (boat fully laden)	29,00	m	95 ft. 2 in.
Max. beam	7,08	m	23 ft. 3 in.
Depth under propellers (boat fully laden)	2,00	m	6 ft. 7 in.
Displacement unladen	115,00	t/lbs.	253532
Displacement laden	138,00	t/lbs.	304238
Max.number of persons on board	20		
Classification	R.I.Na. * 100-A-1.1"Y"		

## TECHNICAL DATA

Hull type: 15,2° of deadrise Warped hull with spray rails

H = Overall height from keel to hard-top 8,50 m 27 ft. 11 in.

Ht = Minimum transport height from keel 7,24 m 23 ft. 9 in.

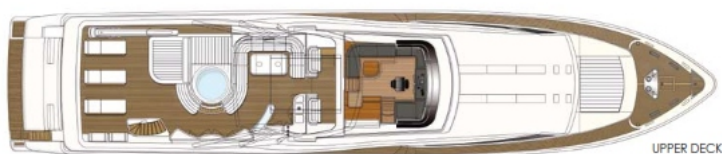
P = Pulpit 0,00 m 0 ft. 0 in.

Fuel tank capacity 18000 lt./US gals. 4756

Water tanks capacity 3000 lt./US gals. 793

Hull and propulsion project: AYT - Advanced Yacht Technology - Ferretti S.p.A. Engineering Dept.

Superstructure and interiors: Zuccon International Project.



UPPER DECK



LOWER DECK



MAIN DECK



## EXTRA ACCESSORIES:

Stabilizing fins TRAC 250  
 TVCC additional control unit for night vision flr "Navigator"  
 Dimmer light main deck  
 Dimmer light lower deck  
 Miele galley appliance diff  
 Miele washing machine diff  
 Fridge in the cockpit- front open  
 Pullman bed in the guest cabin  
 Air conditioning (salon +cabins+ 2 crew  
 Curtains: electrical raising for lower deck (4 cabins)  
 Slem thruster hydraulic 58HP (double propeller)  
 Davit for bow door  
 Fuel filter alfa Laval  
 Rubbing strake: stainless steel for spoller and hull  
 Watermaker Idromar 360 l/h diff. From standard 180 l/h  
 Radar plotter repeater Furuno GD 1920C con display LCD 10.4  
 Shower instead of std bathtub in VIP as stern  
 Big ceiling shower  
 Floor main deck in wood "Tek Fala with maple stripes" diff from std  
 Floor lower deck in wood "Tek Fala with maple stripes" diff from std  
 Cockpit table diff from std  
 Main table in saloon diff from std  
 Floor in gallery diff from std  
 Sunbathing area on the fly at stern diff from std  
 Treatment system for black/grey water Hamann  
 Anchor chain 150mt- diff  
 Dimmer in the cockpit  
 Active carbons filter  
 Softner  
 Spare Oil kit  
 Chain counter: digital each  
 Mosquito mesh for port hole each  
 Name in stainless steel with backlighting each letter  
 Preparation for housing jet ski watercraft in the garage  
 Mini fridge in cabin  
 Spare kit Kohler generator 55000W  
 Antenna TV SAT Receiver standard Common Interface  
 TVCC: Internal monitor LCD 100" additional  
 Laudspeakers additional High Quality amlificated w/ remote for external - couple  
 Dimmer lights flybridge  
 Low level lighting cabinets around fly  
 Black mesh covers for pplot house  
 Lightingrod in external ceiling  
 Lighting rod beneath the bed  
 UV water steriliser  
 Wine cooler  
 TVCC: monitor LCD 10 " for extremely, additional  
 TVCC: thermal night vision flr Pan "Navigator" camera  
 TVCC security system w/motion director and record  
 Miele Dryer- diff  
 Antennas TV SAT + V-SAT Radio Marine 80 combined twin dome  
 TV:electric raising device from the ceiling for TV 32"/37"  
 Metalstyle side ladder  
 Liferrafts in verticle position  
 Lights Underwater xenon each  
 TVCC: camara mot. Pan  
 Double bed near window in std guest cabin  
 Maaterbathroom marbles diff from std  
 Bathroom marbles for VIP cabin at stern- diff from std  
 Twin bathroom marbles (port and starboard)- diff from std  
 Bathroom marbles for VIP cabin at bow-diff from std  
 TV 5" plasma color 16/9 additional  
 Audio-video Multimedia remote with monitor Wi-fi VPC  
 TV 32" LCD Color 16/9 additional  
 TV: electric raising device for TV 50"  
 TVCC: additional control unit for cameras pan and zoom  
 Shower lstead of std bhathtub in VIP at bow

Autoidentification system AIS furuno (TX-Rx I.M.O)  
Telephone satellite Inmarsat Mini M voice/fax  
Saloon armachale  
Coffe table diff from std  
Saloon chairs diff from std  
Saloon lamp: Lumis mod Salumo  
Masterroom décor  
VIP cabin décor, at bow  
Décor VIP at stern  
Port guest cabin décor  
Starboard guest cabin décor  
TVCC: camera color mot. Pan ill Zoom  
Audio-video Multimedia RM Playtime Slave audio for external with speakers  
Day head marbles diff from std  
Dish machine diff from Miele dish machine as for optional Miele  
Move std TV 42" from saloon to master cabin  
Move std TV 20" from one cabin on lower deck to captain's cabin  
Rall to install over the saloon wall panal at bow  
Cockpit chairs on main deck: dedon panama natural  
Extemail small shower in bathroom  
Bow wall in saloon  
Foldable chairs "la Regista", white serralunga  
Chlase lungue: "DEDON. Ying Yang"  
Door handles: ollvand in leather  
Side table (3x3) with wooden top  
Bathroom: deletion of bidet, centered WC each  
Mastro Rapheal Set  
Lableware diff. From std  
Carpels  
Lines with 8 waves, black, diff from std  
Bigger smeg grill- diff from std  
Double filter nafta for all generators  
Additional air sockets with water sockets  
Valve on line top of the filters, to allow air to escape  
Spare kit raco filters  
Bigger drawer  
Floor in Pilot house wood "Tek Fala with mapia stripes" diff from std  
Pratest sel  
Additional freezer in crew area  
Exit for the exhausted oil of the generators  
Exit for the exhausted oil of the motors  
Socket: external waterlight 220V type  
Backwater line  
Black fender covers, diff from std  
Same layout for the 3 command stations  
Venillation system inside the technical storage under the stairs of the pilot house  
2 rele for NEMO exit door  
Disappearing cleats  
One SHUCKO at least for evry socket  
Securing system for tableware: diff from std  
Maps lamp in Pilot house-diff from std  
Two additional grills

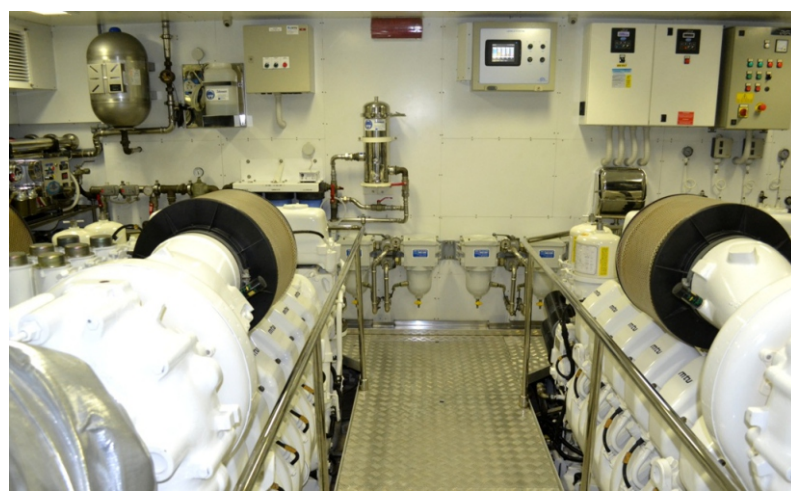














## STANDARD FEATURES

### Main deck

- saloon, dining room and galley
- lobby with day head
- master stateroom

### Lower deck

- lobby
- guest area with two VIP cabins and two guest cabins
- crew area with laundry
- captain's cabin (starboard) with bathroom
- stewardess cabin (port)
- two double crew cabins (forward), each with independent bathroom

### Main deck

#### Exterior

- access hatch to forepeak
- access to bathing platform (stainless steel and plexiglass gate, hydraulic teak and GRP stairs retractable into transom, stainless steel handrails)
- access to engine room (hatch, stainless steel and teak steps)
- access to gangway (stainless steel and plexiglass gate)
- access to the flybridge (GRP and teak stairs, stainless steel handrail, low lighting)
- access to the systems area (wooden and non-slip stairs in the starboard support)
- aft (2), bow (4) roller fairleads
- aft electric glass sliding door with stainless steel frame
- aft handrail in stainless steel (cockpit)
- boat hooks (3)
- bow garage with storage space for tender or jet-ski (max 2.60 m, upon request) with electro-hydraulic door and inspection hatches (2)
- bow hawses (2)
- bow pulpit with stainless steel side rails
- capstans (2) in cockpit docking cabinet (2500W each)
- CCTV colour cameras (3) on cockpit and side deck ceilings
- chain wash down with sea water
- cleats (4 each side)
- closet with shoe cabinet in the port support
- cockpit chairs (10)
- cockpit sink with hot and cold water (mooring station)
- cockpit unit with stowage space
- concealed lighting on cockpit, side decks and bow
- cover for cockpit table and sunbathing area at bow
- cylindrical fenders (10)
- docking lines 100 m
- dockside water connection
- electric anchor windlasses (2) (3500W each) with controls at bow
- electric side exit doors (2)
- electro-hydraulic garage door teak-laid on the inside
- fairleads with stainless steel cleats (2 each side)
- fender covers (10+8)
- fire hose outlets with sea water (2) (bow, starboard side deck)
- fresh water outlets for washing (3) (bow and side decks)
- garage at stern with storage space for tender, water craft, jet-ski (upon request)
- garbage container in the port support of the deckhouse
- glendinning electric shore power connection 100A 400V 3 poles + ground (20 m)
- housed life rings (2) one with rope and luminous buoy
- hydraulic bow thruster (89 Hp)
- inlaid decorative teak trim overhead in cockpit
- inter-com for manoeuvring (2) (bow and cockpit)
- life jackets (20)
- mooring stations (2) with GRP covers, storages for mooring lines

- Pool anchors (2) 130 kg with chains (2) 120 m, diameter 14,5 mm, marked every 25 m
- pull handles in the engine room (engine fuel and generator shut-down, air inlet and ventilation fan shut-off (2), activation of fire extinguishing system)
- refuelment and water inlet on side decks
- round fenders (8)
- side gates (2)
- spot lights on cockpit and side decks
- stainless steel bow staff with bell
- stainless steel deck hardware
- stainless steel, teak-laid electro-hydraulic telescopic gangway with remote control and automatic stanchions
- steering position in the cockpit
- stern (4) and bow (4) stainless steel cleats
- table in teak with natural finish (2850 mm x 1200 mm)
- teak bathing platform with foldaway electro-hydraulic diving bathing ladder, lights and stainless steel side handrails and cleats (2)
- teak deck
- upholstered sunbathing area at bow with headrest cushions
- warping line 100 m
- watertight loudspeakers (4) in the cockpit

### Saloon

- aft electric glass sliding door with stainless steel frame
- air conditioning
- Audio/Video Mediaserver Master
- Bose Home Cinema system LIFESTYLE 28 II (loudspeakers (5), subwoofer, loudspeakers (4) on cockpit)
- cabinets with shelves
- concealed overhead lighting system
- cordless telephone
- electric curtain for aft door
- electric Roman blinds
- fitted carpet with soundproof lining
- I-POD Docking Station
- LCD TV 42" with up/down electric system fitted in the starboard wall cabinet
- living area: leather sofa, leather armchair, coffee table, corner top
- refrigerator
- TV SAT receiver common interface

### Dining area

- access to lobby (sliding door)
- access to the galley (sliding door)
- air conditioning
- cabinets with shelves and drawers
- complete tableware for 12 people
- concealed overhead lighting system
- electric Roman blinds
- fitted carpet with soundproof lining
- glass dining table
- leather chairs (10)

### Galley

- access to dining area (sliding door)
- access to lobby (sliding door)
- acoustic alarm for bilge water level in garage, engine room and bow
- air conditioning
- cabinets with shelves and drawers
- carpeted stairs to crew area
- ceramic electric four ring cooktop with pan holders
- complete tableware for 6 people (crew)
- dishwasher for 12
- eating area: (sofas (2) with storage space and wooden table)
- electric oven
- electric side exit door
- extractor fan 230V with external outlet
- freezer 93 lt.
- fridge 141 lt.
- garbage compactor
- granite counter top
- Hi-Fi system with loudspeakers (2)



- LCD TV 15"
- linoleum flooring
- microwave oven
- overhead cupboards with shelves
- "side by side" fridge-freezer 504 lt. 230V with ice maker (24V through inverter)
- stainless steel sinks (2) hot/cold and salt water
- telephone
- waste disposal unit
- wooden venetian blinds

#### Lobby

- access to dining area (sliding door)
- access to lower deck (wooden stairs, low lighting)
- access to raised helm position (wooden stairs)
- access to the galley (sliding door)
- air conditioning
- cabinets with shelves
- electric Roman blinds
- electric side exit door
- fitted carpet with soundproof lining

#### Day head

- marble flooring with wooden trim
- mirror
- shelves
- vacuum WC
- washbasin with marble counter top, hot and cold water
- wooden venetian blinds

#### Master stateroom

- air conditioning
- Audio/Video Mediaserver Slave
- bedside cabinets (2)
- Audio/Video Mediaserver Slave
- bedside cabinets (2)
- bookcases (2)
- Bose Home Cinema system 3.2.1 II (loudspeakers (2), subwoofer)
- concealed overhead lighting system
- cordless telephone
- double bed with mattress, pillows and bedspread
- drawers under bed (4)
- dressing table with mirror, drawers and leather ottoman
- fitted carpet with soundproof lining
- I-POD Docking Station
- LCD TV 32"
- leather headboard
- leather sofa
- natural ventilation under the mattress
- reading lights (2)
- Roman blinds (one with electric movement)
- TV SAT receiver common interface
- walk-in wardrobe with mirror, drawers, digital safe and wooden venetian blinds

#### Master bathroom

- ceramic bidet with hot/cold fresh water
- cupboards with shelves
- marble flooring with wooden trim
- mirrors
- shower with glass door, stainless steel frame and marble tray and seat
- vacuum WC
- washbasins (2) with marble counter top and hot and cold water

#### Main raised helm position

- access to flybridge helm position (wooden stairs, stainless steel handrails, glass and stainless steel frame companion door)
- access to lobby (wooden stairs)
- acoustic alarm
- air conditioning
- AP50 Simrad autopilot

- CCTV video sequencer with 10" display
- CD/DVD player with loudspeakers (2)
- chart table (drawers (4), shelves)
- cigarette lighter outlet 12V
- clock, barometer, hygrometer
- dimmer for day navigation lights and navigation instrumentation
- electric control for searchlight
- electronic controls for engine clutch and throttle with easy-dock and auto-roll functions
- external acoustic alarm for bilge water level in garage, engine room and bow
- fax
- fire extinguishing system control panel
- flaps angle indicator
- Furuta.net integrated monitoring system with 15" touch-screen display
- helm position electric panel
- inter-com for manoeuvring
- leather covered steering wheel
- leather dashboard
- leather helm-seat with electric movement control
- leather sofa
- light for chart reading
- lights for night and day navigation
- magnetic compass
- Navnet system with colour 15" LCD displays (3) (Furuno 64 miles radar, chartplotter and GPS, depthsounder)
- NAVTEX 700 B
- portable GMDSS VHF (2)
- power-assisted electro-hydraulic steering
- protective external covers for front windscreen
- rudder angle indicator
- SART Transponder ACR PATH FINDER 3
- side awning windows (2)
- Simrad IS20 navigation instrumentation (Eco, Log and Water temperature) (2)
- Simrad IS20 wind gauge
- SSB/DSC Furuno
- steering position with complete navigation instrumentation
- synoptic panel unit with acoustic and visual alarms
- teak and maple wooden flooring
- telephone interface GSM/Voice/Fax Telular
- telephone with switchboard
- VHF (2)
- windlass control at bow
- windscreen wipers (3) with washing system and timer
- wooden table

## Fly Bridge

- access to cockpit (teak and GRP stairs, low lighting, stainless steel handrails)
- acoustic alarm
- chaises-longues (3) with cushions
- cockpit stairs skylight with stainless steel handrail
- cocktail cabinet with stainless steel base and glass top
- cover for helm console, helmsman seat, co-pilot seat, sunpad, table and sofa
- electric operated searchlight
- EPIRB ACR GLOBAL FIX
- GRP fully fitted wet-bar with sink, fridge (2 doors), grill, ice maker, storage
- GRP hard top with electric canopy
- GRP small cabinets
- hydromassage bathtub with cover convertible into sunpad
- life rafts for 20 people (2x10)
- removable stainless steel aft railing
- sofa and table
- stainless steel and varnished electro-hydraulic davit crane 800 Kg to lift and launch tender, water craft, jet-ski from flybridge and garage
- stainless steel flag staff
- stainless steel ladder for hard-top inspection
- stainless steel signal mast
- sunlounge pad
- teak deck
- TV antenna
- TV SAT antenna
- watertight loudspeakers (4)



#### Flybridge helm position

- access to raised helm position (wooden stairs, stainless steel handrails, glass companion door with stainless steel frame)
- AP50 Simrad autopilot
- CD player in watertight box
- co-pilot bench
- digital chain counter (2)
- electric control for searchlight
- electronic controls for engine clutch and throttle with easy-dock and auto-troll functions
- GRP dashboard with electric opening
- helmsman bench with electric movement
- inter-com for manoeuvring
- main engine acoustic alarm
- Navnet system with colour 8" LCD display (Furuno 64 miles radar, chartplotter and GPS, depthsounder)
- plexiglass and stainless steel front windscreen
- power-assisted hydraulic steering
- rudder angle indicator
- second helm position with instruments and alarms
- Simrad IS20 navigation instrumentation (Eco, Log and Water temperature) (2)
- VHF

#### Lower deck

##### Lobby

- access to main deck (wooden stairs, low lighting)
- cabinets with shelves
- fire hose outlet
- fitted carpet with soundproof lining
- mirror

##### VIP cabin at stern

- air conditioning
- Audio/Video Mediaserver Mini Slave
- bedside cabinets (2)
- concealed overhead lighting system
- double bed with mattress, pillows and bedspread
- drawers under bed (4)
- dressing table with mirror, chest of drawers (2) and leather ottoman
- fitted carpet with soundproof lining
- Hi-Fi system with loudspeakers (2)
- LCD TV 20"
- leather headboard
- leather sofa
- natural ventilation under the mattress
- reading lights (2)
- Roman blinds
- telephone
- walk-in wardrobe with mirror, drawers, digital safe, openable porthole in stainless steel and wooden venetian blinds
- windows (2) with openable side portholes (2) in stainless steel

##### VIP bathroom at stern

- ceramic bidet with hot/cold fresh water in separate area with sliding door
- cupboards with shelves
- hydromassage bathtub with marble counter top
- marble flooring with wooden trim
- mirrors
- openable porthole in stainless steel
- vacuum WC in separate area with sliding door
- washbasins (2) with marble counter top and hot/cold fresh water
- wooden venetian blinds

### Guest cabins (2)

- air conditioning
- beds (2) with mattresses, pillows and bedspreads (pullman bed, upon request)
- bedside cabinet
- concealed overhead lighting system
- drawers (2) under each bed
- fitted carpet with soundproof lining
- Hi-Fi system with loudspeakers (2)
- LCD TV 20"
- leather headboard
- mirror
- natural ventilation under the mattress
- openable portholes in stainless steel (2)
- reading lights (2)
- Roman blinds
- telephone
- wardrobe

### Guest bathrooms (2)

- ceramic bidet with hot/cold fresh water
- cupboards with shelves
- marble flooring with wooden trim
- mirrors
- openable porthole in stainless steel
- shower with glass door, stainless steel frame and marble tray
- vacuum WC
- washbasin with marble counter top and hot/cold fresh water
- wooden venetian blinds

## Crew area

### Crew lobby

- cabinets with shelves
- curtain
- dryer
- fitted carpet
- freezer 89 lt.
- Furla.net integrated monitoring system with 15" touch-screen display
- openable porthole in stainless steel
- shelves
- Simrad IS20 navigation instrumentation (Eco, Log and Water temperature)
- telephone
- VHF
- washing machine

### Captain's cabin

- air conditioning
- cabinet with shelves
- CD/DVD player with loudspeakers (2)
- curtain
- drawer under the bed
- fitted carpet
- large bed with mattress, pillow and bedspread
- LCD TV 15"
- openable porthole in stainless steel
- reading light
- storage compartment
- telephone
- wardrobe with mirror and safe



### Captain's bathroom

- cupboards with shelves
- curtain
- mirror
- openable porthole in stainless steel
- separate shower with wooden tray and waterproof curtain
- vacuum WC
- washbasin with hot/cold fresh water
- wooden flooring

### Stewardess cabin

- air conditioning
- bed with mattress, pillow and bedspread
- CD player with loudspeakers (2)
- curtain
- fitted carpet
- openable porthole in stainless steel
- reading light
- telephone
- wardrobe
- washbasin with hot/cold fresh water

### Crew cabins (2)

- bunk-beds with mattresses, pillows and bedspreads
- CD player with loudspeakers (2)
- curtain
- fitted carpet
- mirror
- openable porthole in stainless steel
- reading lights (2)
- storage compartment
- telephone
- wardrobe

## Technical area

### Engine room

- access to cockpit (hatch, teak and stainless steel steps)
- access to systems area (watertight door)
- air extractors (2) with remote controlled emergency shut down
- air inlets with separators and remote controlled emergency shut-down
- aluminium non-slip flooring
- auxiliary electric generator (50000W) with soundproof casing
- day/night CCTV colour cameras (2)
- diverter valves (2) to allow engines to pump water from the bilge
- fire extinguishing system with CO<sub>2</sub> automatic/manual activation
- fuel level gauge
- inspection lamp
- main electric generator (50000W) with soundproof casing
- neon lights
- Racor filters to generators (2)
- Separ filters to main engines (2)
- smoke detector
- smoke separators for generators
- stainless steel foldaway washbasin with fresh water
- stainless steel handrails around main engines
- tool kit, if supplied by engine manufacturer
- water filters (2) for engine cooling system
- water filters (2) for generator cooling system

### Crew bathrooms (2)

- cupboards with shelves
- curtain
- mirror
- openable porthole in stainless steel
- separate shower with wooden tray and waterproof curtain
- vacuum WC
- washbasin with hot/cold fresh water
- wooden flooring

### Systems Area

- access to engine room (watertight door)
- access to garage (watertight door)
- aluminium non-slip flooring
- day/night CCTV colour camera
- Furla.net integrated monitoring system with 15" touch-screen display
- main electric panel
- smoke detector
- telephone
- work bench with vice, drawers and tool set

### Garage

- access to systems area (watertight door)
- bilge/fire extinguishing pump
- electric ventilation fan
- electro-hydraulic control unit for flaps
- electro-hydraulic control unit for gangway
- electro-hydraulic control unit for garage door and bathing ladder
- electro-hydraulic control unit for helm
- electro-hydraulic garage door teak-laid on the inside
- fire extinguishing system with CO<sub>2</sub> automatic/manual activation
- fire hose outlet with sea water
- fresh water outlet for washing
- hot/cold shower
- hydraulic emergency wheel
- inter-com for manoeuvring
- rudder angle indicator
- smoke detector
- tender cradle with launching rails (tender max 4,50 m, upon request)
- wooden and non-slip flooring

## Propulsion and control equipment

### Propulsion and control

- hydraulic bow thruster (89 Hp)
- power-assisted hydraulic steering
- shaft line transmission
- stuffing box with dripless shaft seal, low maintenance
- underwater silenced exhausts

### Fuel system

- day tank (2.500 lt.)
- fuel transfer pump 24V
- fuel transfer pump 400V
- GRP main structural tanks (3) (15.500 lt.)
- Racor filters to generators (2)
- Separ filters to main engines (2)
- stainless steel pipes

### Anti rolling systems

- anti rolling gyro Mitsubishi (ARG) MSM 4000 (4)
- trim tabs (flaps)
- trim tabs (interceptor)

## Electronics

### Communications

- fax (helm position)
- input lines fitted for SATCOM
- internal telephones (12), cordless (2)
- portable GMDSS VHF (2) (helm position)
- routing UMTS system LAN/Wi-Fi
- shore socket (TV, telephone)
- SSB/DSC Furuno
- telephone interface GSM/Voice/Fax Telular
- telephone switchboard
- TV antenna
- TV SAT antenna KVH M7
- TV SAT modulator and multyswitch
- TV SAT receiver common interface (2) (saloon, master cabin)
- VHF (4) (helm position (2), flybridge, galley)

### Monitoring system



#### Furla.net monitoring system with 15" touch-screen display:

- air conditioning system fan coil monitoring and control
- alarm, with database and current alarm, monitoring
- ARG monitoring and control
- bilge pump system monitoring
- black/grey water tank level monitoring
- CCTV monitoring
- electrical system (batteries, generators, shore power, electric panels) monitoring and control
- high and low fuel level and water tank level monitoring
- lighting monitoring and control
- navigation lights monitoring
- outside doors and portholes monitoring
- refrigerator power supply and temperature monitoring
- smoke detection alarm monitoring
- water tank level monitoring
- weather data monitoring

#### CCTV system

- CCTV image modulated in TV set
- CCTV video sequencer with 10" display (helm position)
- closed circuit surveillance system with colour cameras (6)
- external cameras (3) in the cockpit and side decks
- internal cameras (3) day/night in engine room (2) and systems area

#### Navigation

- AP50 Simrad autopilot (2) (helm position, flybridge helm position)
- GPS antenna (2)
- Navnet system with colour 15" LCD displays (3) (Furuno 64 miles radar, chartplotter and GPS, depthsounder) (main helm position)
- Navnet system with colour 8" LCD display (Furuno 64 miles radar, chartplotter and GPS, depthsounder) (flybridge helm position)
- NAVTEX 700 B
- Simrad IS20 navigation instrumentation (Eco, Log and Water temperature) (5) (helm position (2), flybridge helm position (2), crew dinette)
- Simrad IS20 wind gauge (helm position)

#### Equipment

##### Fire extinguishing system

- CO<sub>2</sub> fire extinguishing system controlled from cockpit in engine room and garage
- fire extinguishers located in each room/cabin
- fire extinguishing system with sea water (bow, side decks, lower deck)
- pull handles in the engine room (engine fuel and generator shut-down, air inlet and ventilation fan shut-off (2), activation of fire extinguishing system)
- smoke detector system (in all cabins, galley, lobby, saloon, helm position, garage, engine room, systems area) with main alarm in helm position

##### Air conditioning

- 180.000 BTU with 3 compressors and boiler for winter heating

##### Fresh water system

- dockside water connection
- fresh water autoclave 400V (2)
- fresh water tank (3.000 lt.)
- heating boilers (2) 150 lt. + 150 lt. 230V
- hot water circulating pump
- water maker 180 lt./h

##### Black and grey water system

- additional independent black water tank (550 lt.)
- automatic electric pumps (2) for grey water tank discharge
- grey and black water tank (2200 lt.)
- Marpol discharge outlet for black water
- vacuum system WC with fresh water flush
- washbasins, showers and bidets discharging in intermediate tank and then, by vacuum line, in the main black water tank

### Bilge pump system

- auxiliary electric pumps (5) (accommodation space (3), garage (2))
- bilge alarm in each compartment
- centralized bilge pump system with electric pumps (2) and manual emergency pump with cock handles (13) (accommodation space (4), engine room (4), garage (4), systems area)
- emergency bilge suction pipe (engine room) through engine cooling pump
- Marpol connection for bilge oily water drainage (only with Italian registration)

### Electric system

- 400/230V ac 50 Hz triphase powered by the generators or by the shore power
- automatic battery charger 25A 12V (generator battery bank) (systems area)
- automatic battery chargers 25A 24V (2) (SSB and emergency battery banks) (systems area)
- automatic battery chargers 75A 24V (2) (domestic load and engine battery banks) (systems area)
- auxiliary generator 50000W complete with soundproof casing
- auxiliary generator starting battery 120 Ah 12V (engine room)
- battery bank (1x12) for domestic loads 525 Ah 24V (engine room)
- battery bank (1x2) for MTU electronic 150 Ah 24V (engine room)
- battery bank (1x2) for SSB 120 Ah 24V
- battery bank (1x4) for emergency 230 Ah 24V (engine room)
- battery disconnecting switches
- cathodic protection with zinc anodes (shafts, flaps)
- copper strip ground system
- distribution 24V DC for emergency and navigation lights
- electric sockets 230V throughout
- generator battery banks parallel switch
- glendinning (20 m) 100A 400V 3 poles + ground
- independent battery banks (2x2) for main engines 230 Ah 24V (engine room)
- lighting system 230V
- main electric control panel and secondary panels (helm position, lobby lower deck, galley, crew dinette)
- main engine battery banks parallel switch
- main generator 50000W complete with soundproof casing
- main generator starting battery 120 Ah 12V (engine room)
- transformer for shore power supply 70KVA

### Safety equipment

- EPIRB ACR GLOBAL FIX
- housed life rings (2) one with rope and luminous buoy
- life jackets (20)
- life rafts for 20 people (2x10)
- SART Transponder ACR PATH FINDER 3

### Certificates

- Certificate MCA LY2 short range (upon request)
- International Tonnage Certificate ITT69
- R.I.Na. Class Certificate with certificate plate

Marine Solutions is the exclusive dealer of Ferretti Yachts in India.

If you have any questions, get in touch with us and we would be happy to help you.

Call: +91 9920204080 Email: [info@marinesolutions.in](mailto:info@marinesolutions.in) Visit: [www.marinesolutions.in](http://www.marinesolutions.in)

